

# ETEREA 2.0

Design by  
Danesi & Buzzoni

IT Istruzioni di montaggio

EN Assembly instructions

DE Montageanleitung

FR Instructions de montage

ES Instrucciones de montaje



More details at:  
[platek.eu/ETEREA](http://platek.eu/ETEREA)

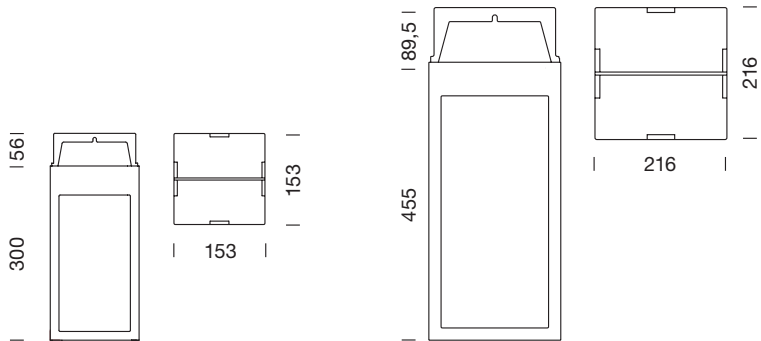



**Platek®**

TECHNICAL DATA

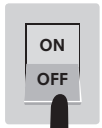
**ETEREA 2.0** - IP65 - IK 08

Gruppo rischio /Risk group 1 (EN 62471:2008)



|                                                                                                              | ETEREA MEDIUM                                                                         | ETEREA LARGE                                                                          |
|--------------------------------------------------------------------------------------------------------------|---------------------------------------------------------------------------------------|---------------------------------------------------------------------------------------|
| White LED<br>220-240V 50/60Hz                                                                                | 9W<br>Real data                                                                       | 20W<br>Real data                                                                      |
| Classe energetica<br>Energy label<br>Energieeffizienzklasse<br>Note de l'énergie<br>Clasificación de energía | A / A+ / A++                                                                          | A / A+ / A++                                                                          |
| Classe<br>Class<br>Schutzklasse<br>Classe<br>Clase                                                           | I  | I  |
| Peso<br>Weight<br>Gewicht<br>Poids<br>Peso                                                                   | 2,60 Kg                                                                               | 5,40 Kg                                                                               |

## TECHNICAL INFORMATION

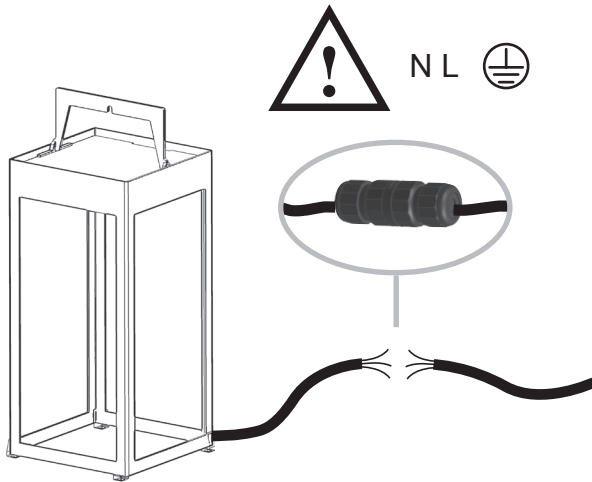
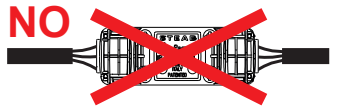


ON

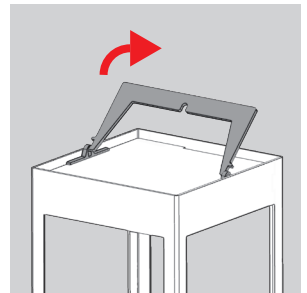
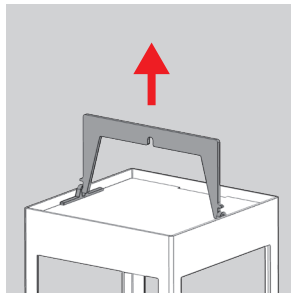
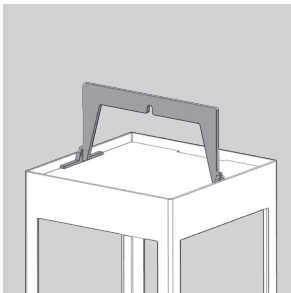


OFF

- IT** Collegamento elettrico
- EN** Electric connection
- DE** Elektrischer Anschluss
- FR** Raccordement électrique
- ES** Conexión eléctrica

**YES****NO**

- IT** Connettore non fornito
- EN** Connector not supplied
- DE** Kabelverbinder bauseits
- FR** Connecteur non fourni
- ES** Conector no suministrado



**IT COME POSSIAMO ESSERE D'AIUTO?**

Ottieni supporto tramite telefono o E-mail, contattandoci al +39 030 68 18 201 o scrivendo all'indirizzo E-mail [supporto@platek.eu](mailto:supporto@platek.eu)

**EN HOW CAN WE HELP YOU?**

Get support by phone or e-mail, call us on +39 030 68 18 201 or send us an email [supporto@platek.eu](mailto:supporto@platek.eu)

**DE WIE KÖNNEN WIR IHNEN HELFEN?**

Sie können unseren Kundendienst per Telefon oder E-Mail erreichen. Kontaktieren Sie uns unter der Telefonnummer +39 030 68 18 201 oder schreiben Sie an folgende E-Mail-Adresse [supporto@platek.eu](mailto:supporto@platek.eu)

**FR COMMENT POUVONS-NOUS VOUS AIDER?**

Vous pouvez obtenir de l'aide par téléphone ou bien par email, en nous contactant +39 030 68 18 201 ou bien en nous écrivant à l'adresse email [supporto@platek.eu](mailto:supporto@platek.eu)

**ES ¿PODEMOS AYUDARTE?**

Solicita soporte a través de nuestro teléfono o email, contactándonos al +39 030 68 18 201 o escribiendo a nuestra dirección de correo electrónico [supporto@platek.eu](mailto:supporto@platek.eu)

PLATEK SRL  
T + 39 030 6818201  
E-MAIL [INFO@PLATEK.EU](mailto:INFO@PLATEK.EU)  
[WWW.PLATEK.EU](http://WWW.PLATEK.EU)

REGISTERED OFFICE:  
VIA PADERNO 19  
25050 RODENGO SAIANO  
(BS) ITALY

HEAD OFFICE:  
VIA MARROCCO 4  
25050 RODENGO SAIANO  
(BS) ITALY



- IT** Conservare le istruzioni.
- EN** Retain the instructions.
- DE** Bewahren Sie die Anleitung.
- FR** Conservez ces instructions.
- ES** Conserve las instrucciones.